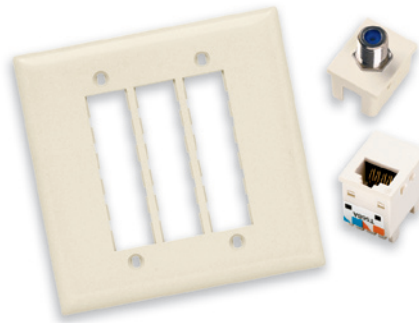


## Keystone Products



## Innovate™ Products



## Activate™ Products



## Patch Panels



*Pass & Seymour/Legrand offers a broad line of network wiring jacks, wall plates, and patch panels to complete your Commercial and Home Systems installations. These data communications products provide the same ease of installation and quality performance that you've come to expect from P&S.*

## Index

Device	Page Number
Keystone Products, Wall Plates & Frames	O-2
Activate™ Products	O-3
Innovate™ Products & Frames & Wall Plates	O-4
Patch Panels, 66 Block & Patch Cords	O-5

# Network Wiring Connectivity Keystone Products, Wall Plates & Frames

## Keystone Products

Enhanced Keystone product offering includes jacks and adapters that feature quick, snap-in mounting that saves installation time. A flexible modular design allows for fast, easy configuration. Use with TradeMaster® Keystone Wall Plates.



**KS58LA**



**KSFFLA**



**KS2BPW**



**KSBL10W**

### Keystone Jacks

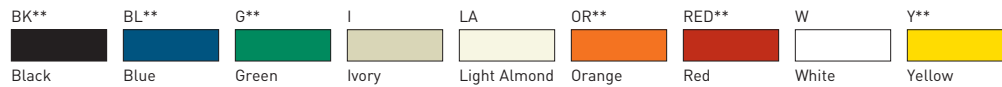
CATALOG NUMBER	DESCRIPTION	AVAILABLE COLORS
KS68AB_	Keystone RJ45 Category 6, T568A/B Universal Wiring	BK, BL, G, I, LA, OR, RED, W, Y
KS58AB_	Keystone RJ45 Category 5e, T568A/B Universal Wiring	BK, BL, G, I, LA, OR, RED, W, Y
KS6U_	Keystone RJ25C 6P/6C Category 3, USOC Wiring	I, LA, W

### Keystone Multimedia & Fiber Adapters

CATALOG NUMBER	DESCRIPTION	AVAILABLE COLORS
KSFF_	Keystone Standard F Connector	I, LA, W
KSFFST_	Keystone Self-Terminating F Connector	I, LA, W
KSBN_	Keystone BNC Connector	I, LA, W
KS2BP_	Pair of Keystone Binding Posts, Red/Positive, Black/Negative	I, LA, W
KSSV_	Keystone S-Video, 110 Termination	I, LA, W
KSRCAB_	Keystone RCA (Black Insulator) Bulkhead	I, LA, W
KSRCAR_	Keystone RCA (Red Insulator) Bulkhead	I, LA, W
KSRCAY_	Keystone RCA (Yellow Insulator) Bulkhead	I, LA, W
KSRCAF_	Keystone RCA (Red Insulator) to F Connector	I, LA, W
KSSC_	Keystone SC Multimode, Phosphor Bronze Sleeve	I, LA, W
KSST_	Keystone ST Multimode, Phosphor Bronze Sleeve	I, LA, W
KSBL10_	Keystone Blank Inserts (Includes 10 Blanks)	BK, I, LA, W

Replace \_ in Catalog Number with Keystone Color Code to designate color.

#### Color Codes for Keystone Products



\*\*Each sold as a package of 10.

## TradeMaster® Keystone Wall Plates & Decorator Frames

Virtually unbreakable TradeMaster® Keystone Wall Plates provide better coverage with an extra 3/16" width and height than standard wall plates to reduce time-consuming drywall rework. Available with label windows to help make identification easy.



**KTPD1W**



**KTPDL1W**



**KS226W**

**KS426W**

Without Label Windows	With Label Windows	DESCRIPTION	AVAILABLE COLORS
KTPD1_	KTPDL1_	1-Port Keystone Wall Plate	I, LA, W
KTPD2_	KTPDL2_	2-Port Keystone Wall Plate	I, LA, W
KTPD3_	KTPDL3_	3-Port Keystone Wall Plate	I, LA, W
KTPD4_	KTPDL4_	4-Port Keystone Wall Plate	I, LA, W
KTPD6_	KTPDL6_	6-Port Keystone Wall Plate	I, LA, W
KS226_		2-Port Keystone Decorator Frame	I, LA, W
KS326_		3-Port Keystone Decorator Frame	I, LA, W
KS426_		4-Port Keystone Decorator Frame	I, LA, W

Replace \_ in Catalog Number to designate color.

# Network Wiring Connectivity Activate™ Products

Pass & Seymour



## Activate™ Products

Choose any combination of our Activate™ high performance modular inserts and wall plates for complete multimedia capability at any point of use. Cut installation time, thanks to this front-load, snap-in design.

### Activate™ Category 6, 5e & USOC Jack Inserts

CATALOG NUMBER	DESCRIPTION	AVAILABLE COLORS
2A145CC6_	Single Port RJ45 Category 6, T568A/B Universal Wiring	LA†, BK, G, GY, WH
2A245CC6_	Dual Port RJ45 Category 6, T568A/B Universal Wiring	LA†, BK, G, GY, WH
2A145C5EU_	Single Port RJ45 Category 5e, T568A/B Universal Wiring	LA†, BK, G, GY, WH
2A245C5EU_	Dual Port RJ45 Category 5e, T568A/B Universal Wiring	LA†, BK, G, GY, WH
2A145C3U_	Single Port RJ45 Category 3, T568A/B Universal Wiring	LA†, BK, WH
2A112U2_	Single Port RJ25C 6P/6C Category 3, USOC Wiring	LA†, WH
2A212U2_	Dual Port RJ25C 6P/6C Category 3, USOC Wiring	LA†, WH
2A1245UC5EU_	Dual Port with Category 3 USOC and Category 5e Jack	LA†, WH

Each sold as a package of 10.



2A245CC6



2A245C5EU

### Activate™ Multimedia Inserts & Fiber Adapters

CATALOG NUMBER	DESCRIPTION	AVAILABLE COLORS
2A1F_	Single F Connector Insert	LA†, BK, G, GY, WH
2A2F_	Dual F Connector Insert	LA†, WH
2ABNCF	BNC/F Connector Insert	LA†
2A2RBBP_	Dual (Red/Black) 3-Way Binding Post Audio Insert	LA†, WH
2A2RCA110	Dual RCA 110 Insert	LA†
2A3RCA110_	Triple RCA 110 Insert	LA†, WH
2A1RCA_	Single RCA Audio Insert	LA†, WH
2A2RCA_	Dual RCA Audio Insert	LA†, WH
2A3RCA_	Triple RCA Audio Insert	LA†, WH
2A1SVHS110	Single Super VHS Video 110 Insert	LA†
2A1SVHSU	Single Super VHS Video Insert	LA†
2A2STMM_	Dual ST Adapter, Singlemode/Multimode, Phosphor Bronze Sleeves	LA†, WH
2A2SC_	Duplex SC Adapter, Singlemode/Multimode, Phosphor Bronze Sleeves	LA†, WH
2ABL_	Blank Insert	LA†, BK, G, GY, WH

Each sold as a package of 10.



2A1F



2A1RCA



2A2STMM

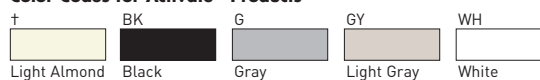
### Activate™ Wall Plates & Modular Furniture Bezel

CATALOG NUMBER	DESCRIPTION	AVAILABLE COLORS
ACSFP_	Single Gang	LA†, WH
ACHDFP_	Double Gang High-Profile	LA†, WH
ACSAP_	Single Gang Angled	LA†, WH
ACDAP_	Double Gang Angled	LA†, WH
ACSWRP_	Single Gang WallReady™	LA†, WH
ACMFB_	Modular Furniture Bezel	LA†, BK, G

Replace \_ in Catalog Number with Activate™ Color Code to designate color.

† No color code designates Light Almond.

#### Color Codes for Activate™ Products



ACSFP

### Activate™ Icon Tabs

CATALOG NUMBER	DESCRIPTION	AVAILABLE COLORS
PSDT_	Data Icon Tabs	BK BL BR G GRY I LA OR P RED Y
PSVT_	Voice Icon Tabs	Black Blue Brown Green Gray Ivory Light Almond Orange Purple Red Yellow

Each sold as a package of 100.

Replace \_ in Catalog Number with Icon Tab Color Code to designate color.



# Network Wiring Connectivity Innovate™ Products & Frames & Wall Plates

## Innovate™ Products

Smooth, polished look fits any décor and matches traditional wiring device wall plates. Modules feature a front-mount, click-in design that remove easily for quick reconfiguration. Built strong to stand up to repeated installations and removals. Virtually unbreakable TradeMaster® Datacom Wall Plates provide better coverage with an extra 3/16" width and height than standard wall plates to reduce time-consuming drywall rework.



S68LA

### Innovate™ Category 6, 5e, 3 & USOC Jacks

CATALOG NUMBER	DESCRIPTION	AVAILABLE COLORS
S68_	RJ45 Category 6, T568A/B Universal Wiring	BK, BL, BR, G, GRY, I, LA, OR, P, RED, W, Y
S58_	RJ45 Category 5e, T568A/B Universal Wiring	BK, BL, BR, G, GRY, I, LA, OR, P, RED, W, Y
S38_	RJ45 Category 3, T568A/B Universal Wiring	BK, GRY, I, LA, W
S6U_	RJ25C 6P/6C Category 3, USOC Wiring	GRY, I, LA, W



S58LA

### Innovate™ Multimedia Modules & Blanks

CATALOG NUMBER	DESCRIPTION	AVAILABLE COLORS
SFF_	Standard F Connector	GRY, I, LA, W
RFCEXT_	Recessed Self-Terminating F-Connector for External Video	BK, I, LA, W
S2BP_	1 Pair of Binding Posts, Red/Positive, Black/Negative	BK, I, LA, W
SBL10_	Blank Inserts (Includes 10 Blanks)	BK, GRY, I, LA, W

Replace \_ in Catalog Number with Innovate™ Color Code to designate color.

#### Color Codes for Innovate™ Products

BK** Black	BL** Blue	BR** Brown	G** Green	GRY** Gray	I Ivory	LA Light Almond	OR** Orange	P** Purple
RED** Red	W White	Y** Yellow						

\*\*Each sold as a package of 10.



SFFLA

### Multimedia & Decorator Frames

CATALOG NUMBER	DESCRIPTION	AVAILABLE COLORS
C5EF_	Category 5e Jack and F Connector	I, LA, W
C25E2F_	2 Category 5e Jacks and 2 F Connectors	I, LA, W
SF326_	3-Port Decorator Frame	I, LA, W

Each sold as a package of 10.

Replace \_ in Catalog Number to designate color.



C5EFLA

### TradeMaster® Datacom Wall Plates

CATALOG NUMBER	DESCRIPTION	AVAILABLE COLORS
TPD1_	1-Port TradeMaster Datacom Wall Plate, Single Gang	GRY, I, LA, W
TPD2_	2-Port TradeMaster Datacom Wall Plate, Single Gang	GRY, I, LA, W
TPD3_	3-Port TradeMaster Datacom Wall Plate, Single Gang	GRY, I, LA, W
TPD4_	4-Port TradeMaster Datacom Wall Plate, Single Gang	GRY, I, LA, W
TPD6_	6-Port TradeMaster Datacom Wall Plate, Single Gang	GRY, I, LA, W
TPD9_	9-Port TradeMaster Datacom Wall Plate, Double Gang	GRY, I, LA, W
WMPP-SS	Wall Mount Phone Plate	Stainless Steel

Replace \_ in Catalog Number to designate color.



TPD1LA



TPD9LA

# Network Wiring Connectivity Patch Panels, 66 Block & Patch Cords

Pass & Seymour



## Patch Panels

High-performance panels meet the TIA/EIA-568-B.2 standard for connecting hardware, including Addendum 1 for Cat 6 component performance.

### Category 6

CATALOG NUMBER	DESCRIPTION	DIMENSIONS	RACK UNITS
24845CC6	24-Port T568A/B Universal Wiring	19" x 1.75"	1
48845CC6	48-Port T568A/B Universal Wiring	19" x 3.50"	2

### Category 5e

CATALOG NUMBER	DESCRIPTION	DIMENSIONS	RACK UNITS
24845C5E	24-Port T568A/B Universal Wiring	19" x 1.75"	1
48845C5E	48-Port T568A/B Universal Wiring	19" x 3.50"	2

Dimensions shown are W x H.  
One Rack Unit = 1.75" H.

### Category 5e Modular IDC Wall-Mount Jack Panels with Stand-Off Legs

CATALOG NUMBER	DESCRIPTION	DIMENSIONS
JP12845C5E	12-Port T568A/ Universal Wiring	10.69" x 3.46" x 3.08"
JP24845C5E	24-Port T568A/ Universal Wiring	10.69" x 3.46" x 3.08"
JP36845C5E	36-Port T568A/ Universal Wiring	10.69" x 6.94" x 3.08"

### Category 5e Wall-Mount Patch Panel with 89D Bracket

CATALOG NUMBER	DESCRIPTION	DIMENSIONS
12845C5E89	12-Port T568A/B Universal Wiring	2.25" x 10" x 1.625"

Dimensions shown are W x H x D.

## 66 Block

Provides flexibility in network interface connections. Used primarily for cross-connections, 66 blocks provide easy connections between customer voice or data networks and telecommunications equipment.

### 66 Block & Bracket

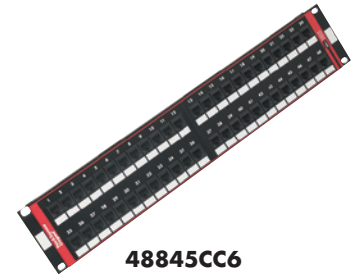
CATALOG NUMBER	DESCRIPTION
PS665089V	50-Pair 66 Block, Unwired & Mounting Bracket

## Patch Cords

Stranded-wire, twisted-pair construction provides the flexibility to make Cross-connections easy.

CATALOG NUMBER	DESCRIPTION	AVAILABLE LENGTHS
PCC6_	Category 6, Gray	3', 5', 7', 10', 15'
PSPC5B_	Category 5e Booted, White	3', 5', 7', 10', 15'

Add desired length to end of Catalog Number to order, example PCC6-10.



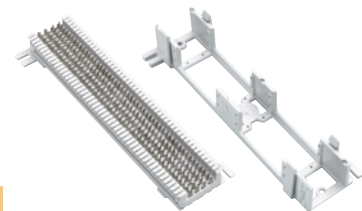
48845CC6



JP24845C5E



12845C5E89



PS665089V\*

\*Block and bracket pictured separately, product sold together as one catalog number.



PSPC5B7 PSC5B5